

International Higher Education Financing Reform

Bruce Chapman

College of Business and Economics, Australian National University

Centre for Global Higher Education, University College London

Outline

- (i) World-wide student loan reform: the broad sweep
- (ii) The essence of TBRLs
- (iii) What are ICLs and what are their Implications?
- (iv) RBs for TBRL Illustrated
- (v) Recent CGHE research input into debates/legislation in the US (2016/17), Ireland (2017), Colombia (2016/18) and Brazil (2017/18)
- (vi) Two case studies: Japan (Lorraine Dearden) and South Korea (Doreen Doan)

2 The Essence of TBRLs

(i) TBRLs have repayment obligations fixed over time (eg Stafford);
ICLs have no repayment obligations unless the debtor's income is high

(ii) Thus TBRLs can mean:

Repayment hardships

Borrowing from loan sharks, or friends and family

Defaults

Low government revenue from deferment or default

High collection inefficiencies and costs from chasing loans

What are ICLs and What are Their Implications?

(i) Again, the major point relates to collection: ICLs have repayment obligations which depend on income not time

Repayment only if a debtor's income exceeds a certain level

Thus no repayment when unemployed, in low paying job

Therefore:

- No repayment hardships, no struggle or anxiety

- No default and credit reputation loss

- No loss of future revenue from default

(ii) Further:

- Highly efficient if collected by employers

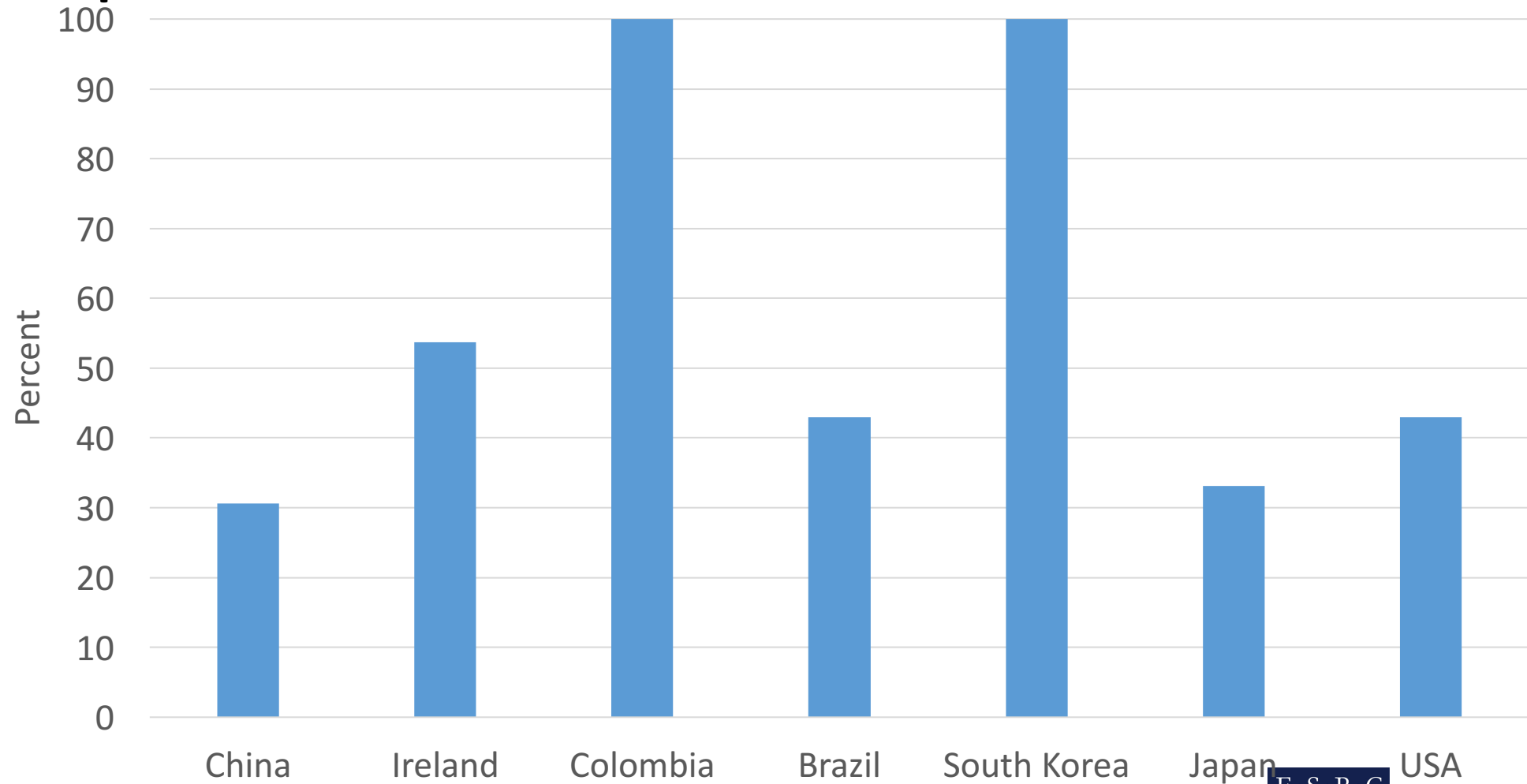
- No need for a large and expensive government administration

(i)
5 RBs for TBRL Illustrated

RB: Repayment burden in period = Loan
Repayment/Income

Simply, TBRLs can't be repaid by many debtors without help from others (job choice and family formation issues must be affected)

International Comparisons of RBs with TBRLs. RBs for the bottom 20 percent of Male Graduate Incomes in Countries with TBRL

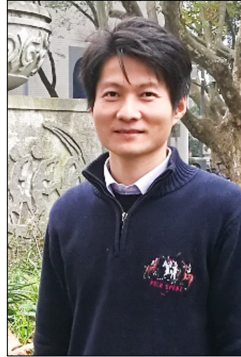


Recent CGHE research input into
debates/legislation in the US (2016/17), Ireland
(2017), Colombia (2016/18) and Brazil (2017/18)

RB Country Specific Research



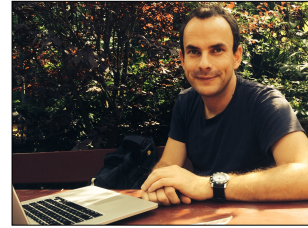
Paulo Nascimento
BRAZIL



Yu Cai
CHINA



Juan Felipe Serna &
Roberto Zarama
COLOMBIA



Mathias
Sinning
GERMANY



Daniel Suryadarma
INDONESIA



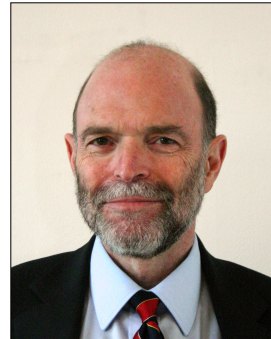
Aedin Dorris
IRELAND



Russayani
Ismail
MALAYSIA



Kiatanantha
Lounkaew
THAILAND



Nicholas Barr



Lorraine Dearden
USA



Susan Dynarski



Amy Liu
VIETNAM

AN ESRC & HEFCE
INVESTMENT

CENTRE
FOR
**GLOBAL
HIGHER
EDUCATION**



Two Case Studies: Japan and South Korea

AN ESRC & HEFCE
INVESTMENT

CENTRE
FOR
**GLOBAL
HIGHER
EDUCATION**



AN ESRC & HEFCE
INVESTMENT

CENTRE
FOR
**GLOBAL
HIGHER
EDUCATION**



10 Images of TBRLs and ICLs: The monster and the kitten



