

# HIGHER EDUCATION AND THE PANDEMIC IN EAST AND SOUTHEAST ASIA

## ARE THERE MODELS HERE FOR THE REST OF THE WORLD?



**Norzaini Azman**

Department of Educational Leadership & Policy  
Faculty of Education  
Universiti Kebangsaan Malaysia



Chair Person

Malaysian Society for Higher Education Policy and  
Research Development (PenDaPaT)

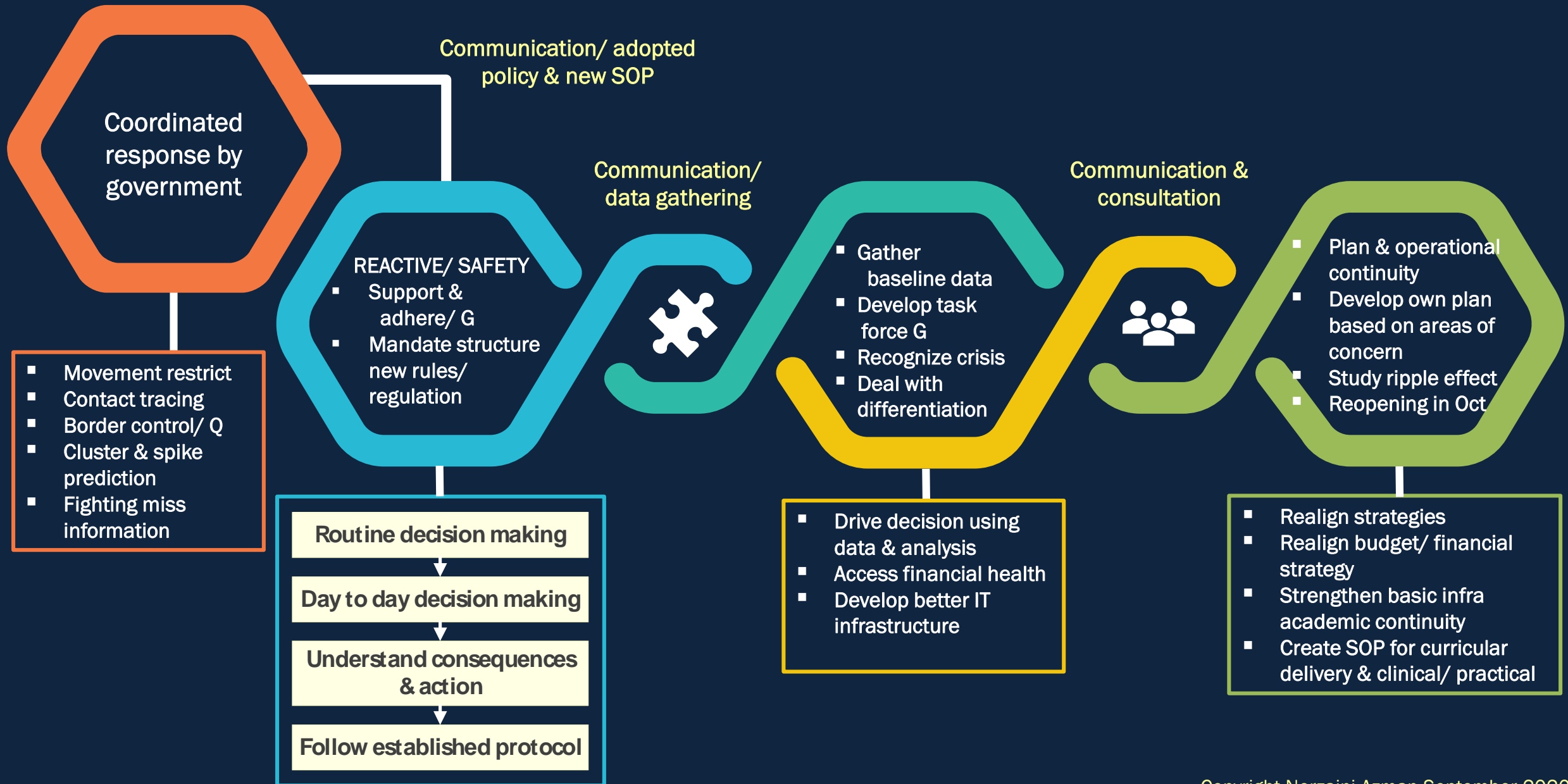
# Chronology of Events Describing the Malaysian Government & HE COVID-19 Response (Jan 2020 – Jun 2020) (Azman & Abdullah, 2020)

Phases	Government/ MoHE	HEIs
<p><b>THE ONSET</b> 23 Jan 2020</p> <ul style="list-style-type: none"> <li>3 active cases</li> </ul>	-	<ul style="list-style-type: none"> <li>Mandatory 14-day self-quarantine international students</li> <li>Only essential travels abroad allowed for academic staff</li> <li>Restrictions on mass gatherings</li> </ul>
<p><b>THE SHOWDOWN</b> 15 March 2020</p> <ul style="list-style-type: none"> <li>535 active cases (within 2<sup>nd</sup> phase of MCO 1-14 April 2020)</li> </ul>	<ul style="list-style-type: none"> <li>National Security Council (NSC) cancelled all mass gatherings (meetings, sports, social &amp; religious events)</li> </ul>	<ul style="list-style-type: none"> <li>HEIs mandated online T&amp;L blended</li> <li>Some HEIs prohibited students to leave campus</li> </ul>
<p>16 March 2020</p> <ul style="list-style-type: none"> <li>672 active cases</li> </ul>	<ul style="list-style-type: none"> <li>PM announced Movement Control Order (MCO) from 18- 31 March (2 weeks)</li> </ul>	<ul style="list-style-type: none"> <li>HEIs closed except essential services (healthcare &amp; supermarkets)</li> </ul>
<p>17 March 2020</p> <ul style="list-style-type: none"> <li>782 active cases</li> </ul>	<ul style="list-style-type: none"> <li>Borders closed &amp; inter-state air &amp; land travels prohibited</li> <li>MoHE issued a directive - students choose to return home or remain in campus</li> </ul>	<ul style="list-style-type: none"> <li>P HEIs instructed students to return home</li> <li>HEIs prepared SOP for students in campus</li> </ul>
<p>20 March 2020</p> <ul style="list-style-type: none"> <li>1,138 active cases</li> </ul>	<ul style="list-style-type: none"> <li>MoHE forbade students to leave premises</li> <li>Government subsidised meals &amp; sundry items to campus/ rented properties.</li> <li>MoHE prohibited all digital courses/learning except by open learning mode</li> </ul>	<ul style="list-style-type: none"> <li>Prepared contingency measures for T &amp; L &amp; staff work arrangements</li> <li>Adjusted mid semester break to end of April</li> </ul>
<p>25 March 2020</p> <ul style="list-style-type: none"> <li>1,996 active cases (within 1<sup>st</sup></li> </ul>	<ul style="list-style-type: none"> <li>PM announced extended of MCO by another two weeks (2<sup>nd</sup> Phase of MCO)</li> </ul>	-

# Chronology of Events Describing the Malaysian Government & HE COVID-19 Response (Jan 2020 – Jun 2020) (Azman & Abdullah, 2020)

Phases	Government/ MoHE	HEIs
<p><b>THE ACCLIMATIZATION</b> 10 April 2020</p> <ul style="list-style-type: none"> <li>▪ 4,485 active cases (within 2<sup>nd</sup> phase of MCO 1-14 April 2020)</li> </ul>	<ul style="list-style-type: none"> <li>▪ PM extended MCO by another two weeks (3<sup>rd</sup> Phase of MCO)</li> </ul>	<ul style="list-style-type: none"> <li>▪ Revised academic calendar</li> <li>▪ Issued circular to mandate online delivery of T &amp; L activities until 31 Dec 2020</li> <li>▪ Introduced a 4-week buffer period for students and staff to complete the syllabus for the remaining academic semester</li> </ul>
<p>27 April 2020</p> <ul style="list-style-type: none"> <li>▪ 5,848 active cases (within 3<sup>rd</sup> phase of MCO 15-28 April 2020)</li> </ul>	<ul style="list-style-type: none"> <li>▪ Government initiated operation to send students home</li> <li>▪ A 24-hour Command Centre COVID 19 operation set up at MoHE</li> <li>▪ PM extended MCO by two weeks (4<sup>th</sup> Phase of MCO) &amp; one month (5<sup>th</sup> phase)</li> </ul>	<ul style="list-style-type: none"> <li>▪ Introduced SOPs for online assessments</li> <li>▪ Introduced clearer SOPs on WFH</li> <li>▪ Contingency funding to help students with broadband subscription and device procurement.</li> </ul>
<p>10 May 2020</p> <ul style="list-style-type: none"> <li>▪ 6,705 active cases (within 4<sup>th</sup> phase of MCO 29/04 – 12/05/2020)</li> </ul>	-	-
<p><b>THE NEW NORMAL</b> 7 June – 31 December 2020</p> <ul style="list-style-type: none"> <li>▪ 8,326 active cases</li> </ul>	<ul style="list-style-type: none"> <li>▪ PM introduced the Recovery MCO from 10 June – 31 Aug – 31 Dec 2020</li> <li>▪ MoHE – HEIs to operate in 12 Oct 2020</li> </ul>	<ul style="list-style-type: none"> <li>▪ Work resumed in HEIs with stringent physical distancing</li> <li>▪ Online delivery of academic programmes until the end of 2020 except for:               <ol style="list-style-type: none"> <li>a) Post-graduate students in research mode</li> <li>b) Final-year students doing clinical work, practical, laboratory</li> <li>c) Final-year students with no internet access and are in uncondusive</li> <li>d) Students with special needs enrolled in the TVET</li> <li>e) Implemented staggered return of staff to campus or allow WFH</li> </ol> </li> <li>▪ Plan to open in Oct 2020</li> </ul>

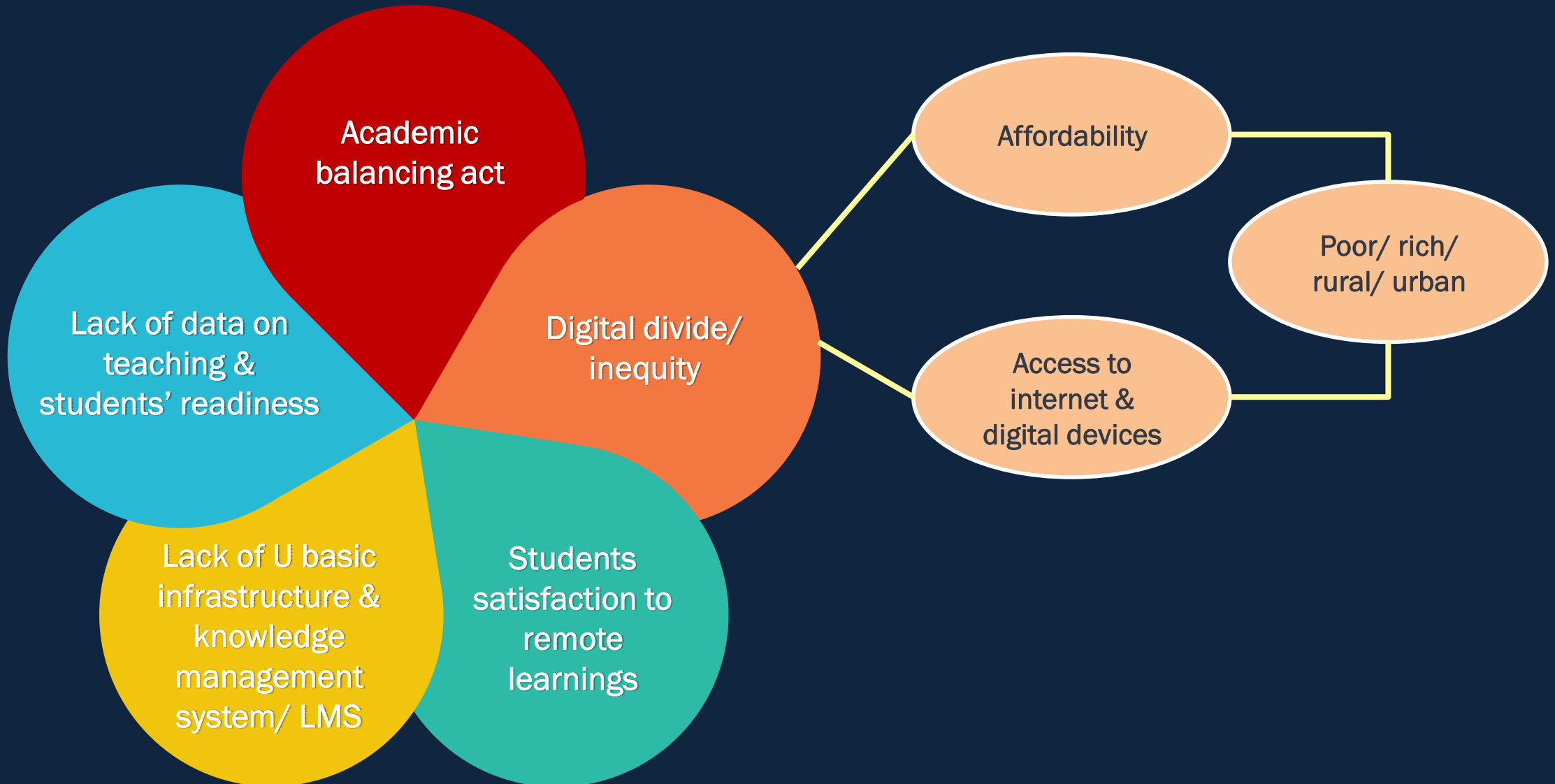
# Malaysian HE COVID-19 Practical Process Model





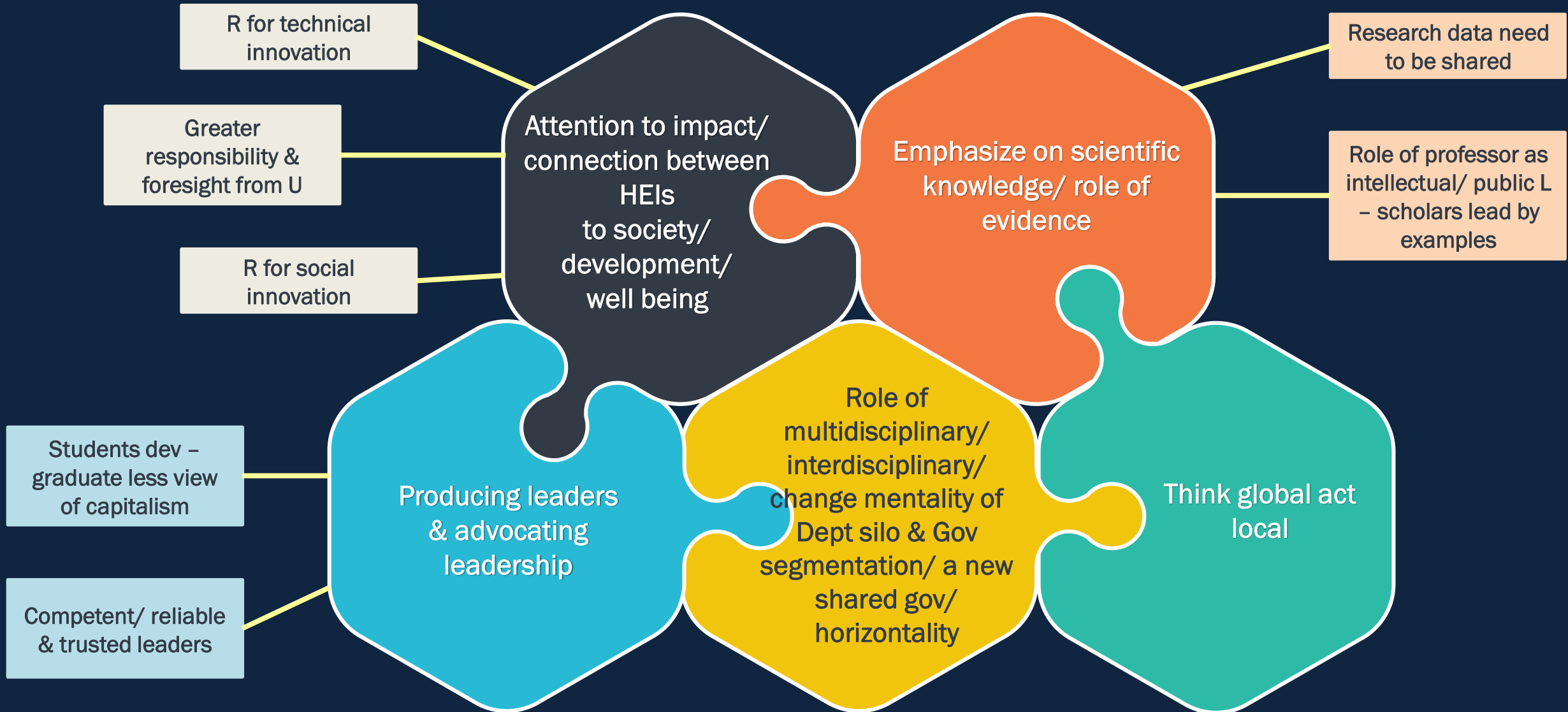
# Lesson Learnt: Weathering the COVID-19 & Moving Forward

## Challenges: Accelerate Use of Technology



# Lesson Learnt: Weathering the COVID-19 & Moving Forward

## Opportunities: HEIs for Public Good & Social Change



Post Oct

POST OCT

Academic continuity

Taking advantages of Asia as attractive destinations

Place based blended distance

Returning students

Distance learning

New domestic

Post graduates

New professional courses

Distance/ open learning

Research

Lab based – normal (field work in the country)

Services

Back to normal (restrict students services)

- Taking advantage of high domestic unemployment/ domestic young population
- Gov aids/ employees reskills needs
- Online/ blended professional courses
- Executive programs online targeting prof & international





Thank You  
TERIMA KASIH