

How do international students navigate their post-study options?

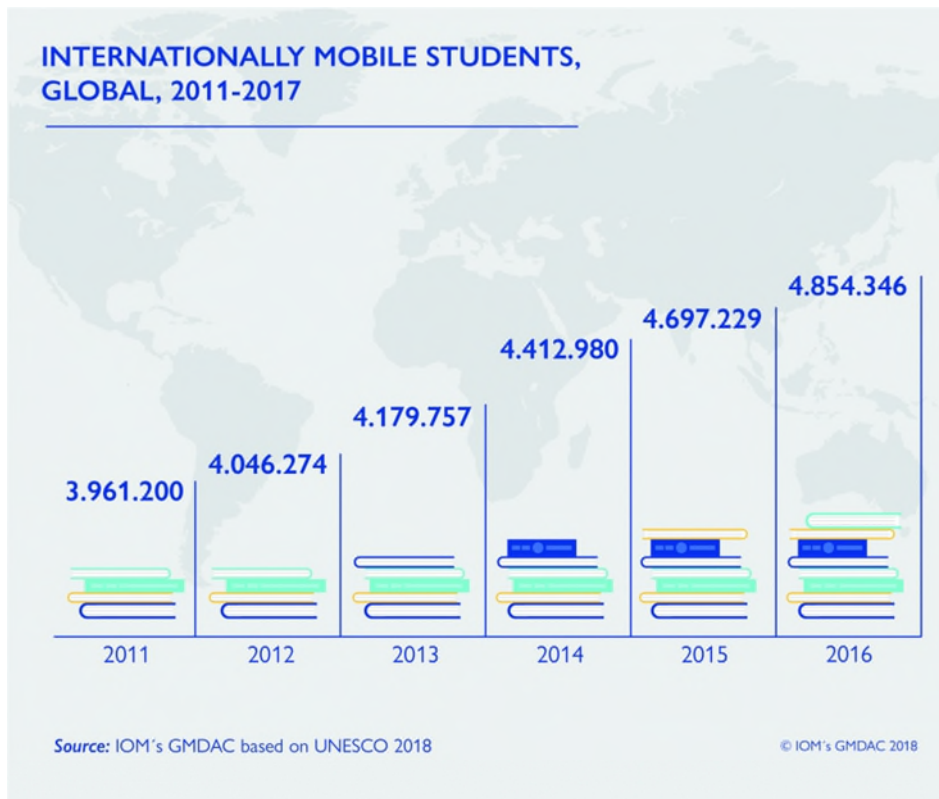
Looking to the past, living in the present, and building for the future

Thomas Brotherhood

Doctoral Candidate, University of Oxford

thomas.brotherhood@education.ox.ac.uk

Why study student migration?



Government should make it easier for foreign students to remain in UK after university, concludes review



Migration Advisory Committee publishes report on international students

11 September 2018

Immigration International

For the first time, a US college is insuring itself against a drop in Chinese students

By Aisha Hassan • November 30, 2018

Foreign students transforming Canada's schools, immigration

What kind of research is needed?



1. Complexities of individuals' identities.
2. Is temporally sensitive
3. Dynamic interaction of individual agency with structural forces

Research design

National Case Studies

UK
Process of closing to student-migrants

Japan
Process of opening to student-migrants

Methodology

Biographical-Narrative “Entry” Interview
During Study

9-15
months

Semi-Structured “Exit” Interview
Post-study

Theoretical Framework

Iteration
Habitual action and the “selective reactivation” of patterns of action

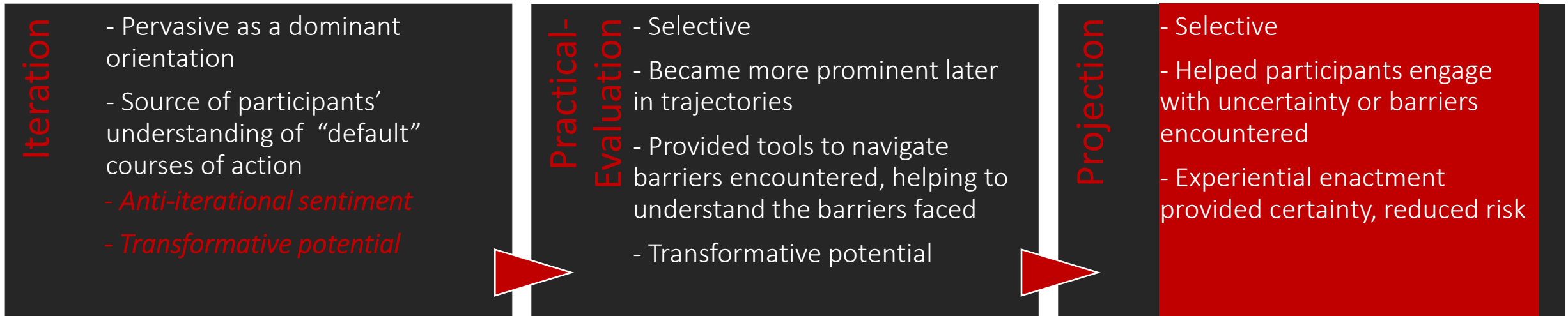
Practical-Evaluation
Practical and normative judgment between trajectories of action

Projection
Imaginative creation of possible patterns of action, suitable to the actor

Influence of regulations on post-study options

- *Receptivity* frames the relationship between participants and the host country,
 - Persisted throughout their trajectories
- Participants exhibited a *variable understanding of regulations*
 - *Stability and transparency*
 - Access to accurate and digestible information, and support

Development and practice of agency



Agentic orientations *evolve markedly* during trajectories

Different agentic orientations offered *different tools* to navigate post-study options

Introducing students to different forms of practice *may empower their agency* in post-study environment

Implications

- Research
 - Time series data, *temporal sensitivity*, intensive methods
- Practice
 - *Consistent* interaction with student-migrants is important
 - Inadequacies of entry-exit model
 - Recognition of importance of *timing interventions*.
- Policy
 - UN Compact on “safe, orderly, and regular migration” (2018)
 - *Temporal guarantees*