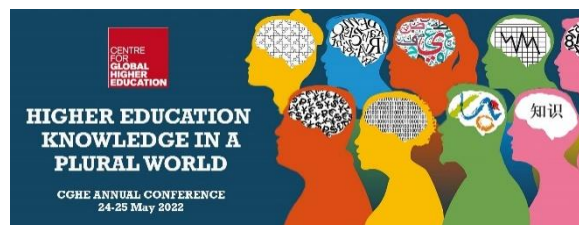


CGHE Annual Conference 24-25 May 2022: Session details



The role of research in higher education and research assessment

24 May 2022, 3.10-4.10 (UK)

Alis Oancea, Gemma Derrick, James Robson, Maria Rucsandra Stan and Xin Xu

In this session, we will share insights from our ongoing empirical work on six research systems that have been differentially shaped through formalized performance-based periodical assessments of research (in Australia, England, Italy, New Zealand, Norway, Hong Kong SAR). The study explores reflectively these systems and places them in critical dialogue with experiences from other contexts, including from Africa, Latin America and North America. During the session, we will outline emerging findings on the policy frames and configurations of these systems and their relationships with global dynamics of knowledge. We will also anticipate the next phase of the study, which dives into organisational framings for research, including structures, missions, cultures, practices and inter-sectoral links; and listens actively to individual accounts of the lived experience of a wide range of participants and stakeholders in the research (eco) system. We draw on these insights to design and pilot a survey of global dynamics of research that takes a balanced and participatory approach across both the global north and the global south. We aim for the findings to recognise and showcase the diversity of voices and cultural traditions and contexts in relation to understandings of research values, quality, impact and equity, as well as to provide implications from the standpoints of various stakeholders.

Alis Oancea is Professor of Philosophy of Education and Research Policy at the University of Oxford and leads CGHE Project 3, 'The role of research in higher education and research assessment'.

Gemma Derrick is an Associate Professor (Higher Education) at the University of Bristol and a CGHE Co-Investigator on Project 3, 'The role of research in higher education and research assessment'.

James Robson is Departmental Lecturer in Higher Education at the University of Oxford, Associate Director of SKOPE, and a CGHE Co-Investigator on Project 3, 'The role of research in higher education and research assessment'.

Maria Rucsandra Stan is a PhD candidate at LIUC University, Italy. Currently, she is carrying out her research period abroad at the Education Department University of Oxford under the supervision of Professor Alis Oancea.

Xin Xu is a Junior Research Fellow at Kellogg College, University of Oxford, and a CGHE Research Fellow on Project 3, 'The role of research in higher education and research assessment'.